

## DIRECTIONS FOR USE

**Sapphire** is a professional biocide for the use on external hard surfaces including: roofs, driveways, pavements, concrete, around buildings and on artificial sports surfaces such as tennis courts to control moulds, fungi and algae.

**Sapphire** is ideally applied as a spray. It can also be applied by brush or mop. It is essential that all areas to be cleaned are thoroughly wetted with the product. **Sapphire** works on contact and continues to work for 5 to 7 days after application. In some instances a second treatment may be necessary. All surfaces may be used after application has dried.

A new solution of **Sapphire** should be made up daily.

## HEALTH & SAFETY INFORMATION

**Causes severe skin burns and eye damage.**

**Very toxic to aquatic life with long lasting effect.**

The COSHH (Control of Substances Hazardous to Health) Regulations 2002 (as amended) apply to the use of this product at work.

Wash thoroughly after use.

Wear protective gloves/protective clothing/eye protection/face protection. Avoid excessive contamination of coveralls

**DO NOT CONTAMINATE FOODSTUFFS, EATING UTENSILS OR FOOD CONTACT SURFACES**

**IF SWALLOWED:** Rinse mouth. Do NOT induce vomiting.

**IF ON SKIN (or hair):** Take off immediately all contaminated clothing. Rinse skin with water/shower.

**WASH HANDS AND EXPOSED SKIN** before meals and after use

**IF INHALED:** Remove person to fresh air and keep comfortable for breathing.

**IF IN EYES:** Rinse cautiously with water for several minutes. Remove contact lenses, if present and easy to do. Continue rinsing.

Immediately call a POISON CENTRE or doctor/physician.

**KEEP IN A SAFE PLACE**

Dispose of content and/or containers in accordance with regulations on hazardous waste or packaging and packaging waste respectively.

**KEEP AWAY FROM TREATED SURFACES UNTIL DRY.**

Use biocides safely. Always read the label and product information before use.

## AGRIGEM

Gem House, Riverside Enterprise Park,  
Skellingthorpe Road, Saxilby, Lincoln, LN1 2FU

Tel: +44 (0) 1522 246 491  
sales@agrigem.co.uk

**Statutory conditions relating to use**  
FOR USE ONLY BY PROFESSIONAL OPERATORS  
FOR USE ONLY AS A SURFACE BIOCIDES

## Application rate:

- Dilute 1 Litre of Sapphire to 20L with water and apply to 100 m<sup>2</sup>

Users must comply in full with all their legal responsibilities under the Control of Pesticides Regulations 1986 (as amended), including complying with all Conditions of Approval.

HSE No. 10417

# UN1903



## DANGER

**Contents: 1L e**

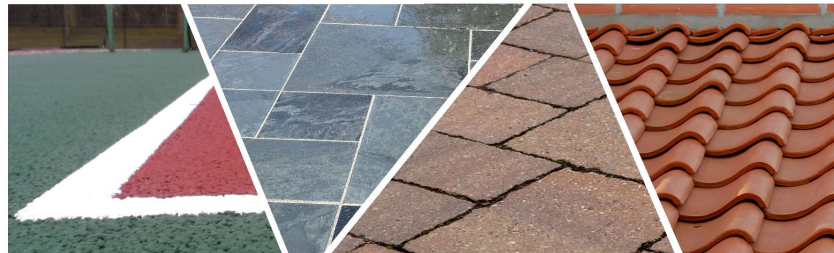
**Pack Size: 6 x 1L e**  
**(7.08kg)**



# SAPPHIRE®

Contains: Didecyl dimethyl ammonium chloride 112.5 g/L

**Professional Hard Surface Biocide For The Removal Of  
Mould & Algae From All External Hard Surfaces**



## The Professional's Choice