

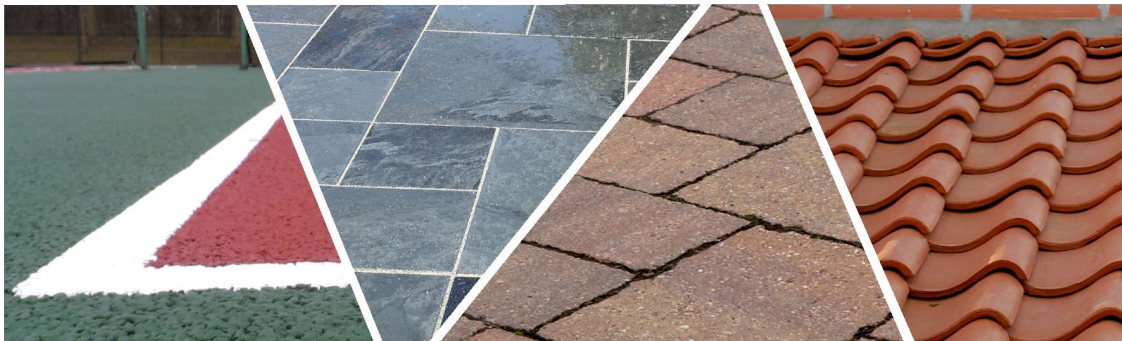
Contents: 5L e
Pack Size: 4 x 5L e
(23.6kg)



SAPPHIRE®

Contains: Didecyl dimethyl ammonium chloride 112.5 g/L

**Professional Hard Surface Biocide For The Removal
Of Mould & Algae From All External Hard Surfaces**



The Professional's Choice

DIRECTIONS FOR USE

Sapphire is a professional biocide for the use on external hard surfaces including: roofs, driveways, pavements, concrete, around buildings and on artificial sports surfaces such as tennis courts to control moulds, fungi and algae.

Sapphire is ideally applied as a spray. It can also be applied by brush or mop. It is essential that all areas to be cleaned are thoroughly wetted with the product. **Sapphire** works on contact and continues to work for 5 to 7 days after application. In some instances a second treatment may be necessary. All surfaces may be used after application has dried.

A new solution of **Sapphire** should be made up daily.

Statutory conditions relating to use

FOR USE ONLY BY PROFESSIONAL OPERATORS

FOR USE ONLY AS A SURFACE BIOCIDES

Application rate:

- Dilute 1 Litre of Sapphire to 20L with water and apply to 100 m²

Users must comply in full with all their legal responsibilities under the Control of Pesticides Regulations 1986 (as amended), including complying with all Conditions of Approval.

HSE No. 10417

UN1903

HEALTH & SAFETY INFORMATION

Causes severe skin burns and eye damage.

Very toxic to aquatic life with long lasting effect.

The COSHH (Control of Substances Hazardous to Health) Regulations 2002 (as amended) apply to the use of this product at work.

Wash thoroughly after use.

Wear protective gloves/protective clothing/eye protection/face protection. Avoid excessive contamination of coveralls

DO NOT CONTAMINATE FOODSTUFFS, EATING UTENSILS OR FOOD CONTACT SURFACES

IF SWALLOWED: Rinse mouth. Do NOT induce vomiting.

IF ON SKIN (or hair): Take off immediately all contaminated clothing. Rinse skin with water/shower.

WASH HANDS AND EXPOSED SKIN before meals and after use

IF INHALED: Remove person to fresh air and keep comfortable for breathing.

IF IN EYES: Rinse cautiously with water for several minutes. Remove contact lenses, if present and easy to do. Continue rinsing.

Immediately call a POISON CENTRE or doctor/physician.

KEEP IN A SAFE PLACE

Dispose of content and/or containers in accordance with regulations on hazardous waste or packaging and packaging waste respectively.

KEEP AWAY FROM TREATED SURFACES UNTIL DRY.

Use biocides safely. Always read the label and product information before use.



AGRIGEM

Gem House, Riverside Enterprise Park,
Skellingthorpe Road, Saxilby, Lincoln, LN1 2FU

Tel: +44 (0) 1522 246 491
sales@agrigem.co.uk

DANGER